

FED. ROAD DIST. NO.	STATE	PROJ. NO.	FEED. NO.	SHEET NO.	TOTAL SHEETS
DESCRIPTION					DATE

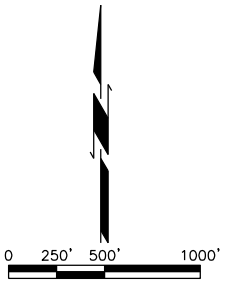
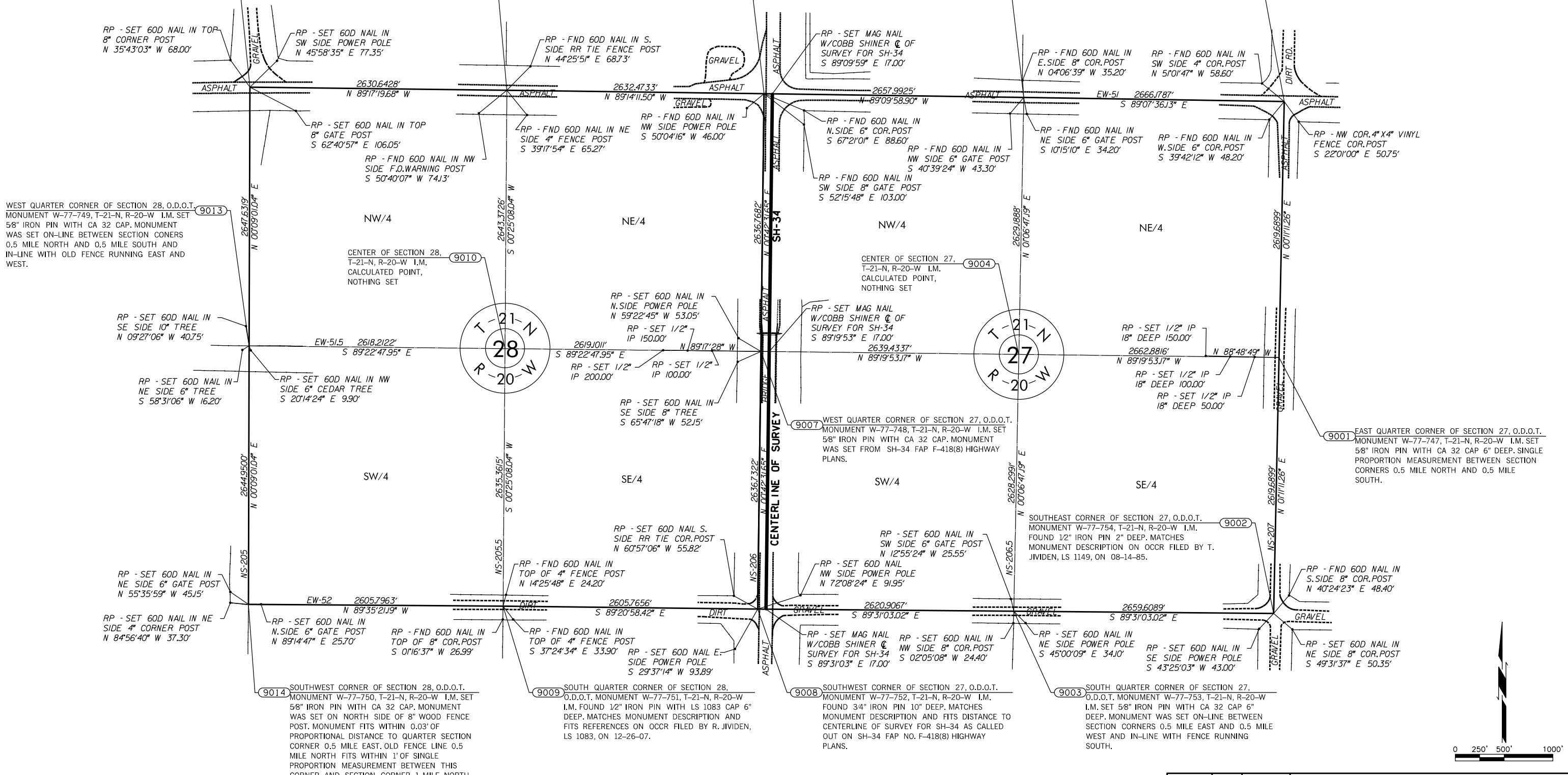
NORTHWEST CORNER OF SECTION 28, O.D.O.T. MONUMENT W-77-742, T-21-N, R-20-W I.M. FOUND 60D NAIL 6" DEEP. MONUMENT FITS PROPORTIONAL DISTANCE TO QUARTER SECTION CORNER 0.5 MILE EAST. MONUMENT ALSO FALLS IN CENTER OF EAST-WEST ROAD AND IN-LINE WITH ROAD RUNNING NORTH.

NORTH QUARTER CORNER OF SECTION 28, O.D.O.T. MONUMENT W-77-743, T-21-N, R-20-W I.M. FOUND 1/2" IRON PIN 6" DEEP. MATCHES MONUMENT DESCRIPTION AND FITS REFERENCES ON OCCR FILED BY R. JVIDEN, LS 1083, ON 07-22-08.

NORTHEAST CORNER OF SECTION 28, O.D.O.T. MONUMENT W-77-744, T-21-N, R-20-W I.M. FOUND BENT 3/4" IRON PIN 12" DEEP. MONUMENT FITS DISTANCE TO CENTERLINE OF SURVEY FOR SH-34 AS CALLED OUT ON SH-34 FAP NO. F-418(8) HIGHWAY PLANS.

NORTH QUARTER CORNER OF SECTION 27, O.D.O.T. MONUMENT W-77-745, T-21-N, R-20-W I.M. FOUND 1/2" IRON PIN 6" DEEP. MATCHES MONUMENT DESCRIPTION AND FITS 3 OF 3 REFERENCES ON OCCR FILED BY R. JVIDEN, LS 1083, ON 01-03-95.

NORTHEAST CORNER OF SECTION 27, O.D.O.T. MONUMENT W-77-746, T-21-N, R-20-W I.M. FOUND 60D NAIL 6" DEEP. MATCHES MONUMENT DESCRIPTION AND FITS 2 REMAINING REFERENCES ON OCCR FILED BY R. JVIDEN, LS 1083, ON 08-14-85.



P.L.S.	J.H.F.	05/29/13	SH 34, BRIDGE OVER N. PERSIMMON CREEK, 7.6 MILES N. OF THE DEWEY COUNTY LINE	WOODWARD COUNTY
DRAWN	J.E.M.	05/29/13		
CHECKED	T.J.W.	05/29/13		
APPROV.	J.H.F.	05/29/13		
CREW CHIEF	T.J.W.	SWO NO. 4844W	J/P NO. 28827(04)	SHEET NO. 16